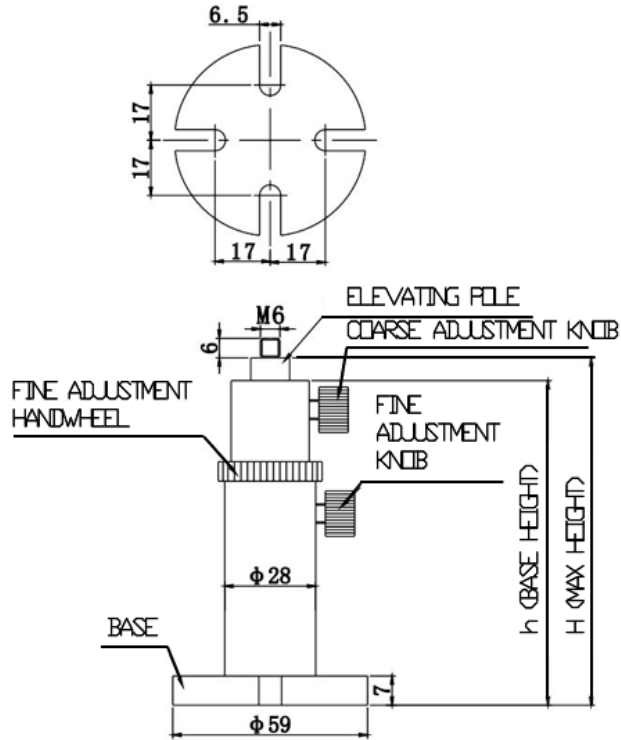


Rotational Post Holder F-Series

Part Number: RPHF-125

Mechanical Drawing:



Technical Specifications:

| | |
|-----------------------------|------|
| Base Height, h (mm) | 125 |
| Max Height, H (mm) | 250 |
| Displacement (mm) | 85 |
| Fine Adjustment length (mm) | 40 |
| Weight (kg) | 0.31 |

NOTE: PROPRIETARY AND CONFIDENTIAL THE INFORMATION CONTAINED IN THIS DRAWING IS THE SOLE PROPERTY OF WAVELENGTH OPTO-ELECTRONIC(S) PTE LTD. ANY REPRODUCTION INPART OR AS A WHOLE WITHOUT THE WRITTEN PERMISSION OF WAVELENGTH OPTO-ELECTRONIC(S) PTE LTD. IS PROHIBITED.