

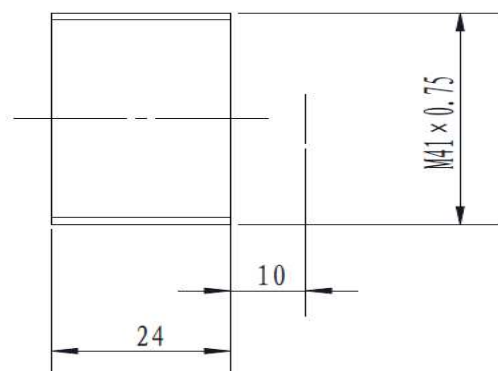
SWIR Lens 1-3μm



Part no.: IRSW32.4-2.5

Opto-Mechanic Property	Specification	Remarks
Focal Length	32.4mm	
F#	1.0	
Wavelength	1μm-3μm	
Image Diagonal	-	
Average Transmission	>85%	
Circular FOV	2.5°	
Back Focus Distance	-	
Back Working Distance	10mm	
Dimensions	Length 24mm, Φ41mm	
Focus Type	Fixed Focus	
Focus Range	-	
Mount Type	M41*0.75	
Detector	-	Not for FPA detector
Weight	-	
Environmental		
Operating Temperature	-30°C to +60°C	
Storage Temperature	-40°C to +80°C	
External Coating	AR	Anti-Reflection coating
Humidity	100%RH at 26°C and 74%RH at 35°C for 24 hours	

Drawing



SWIR Lens 1-3μm

NEW

Part no.: IRSW0252064

Opto-Mechanic Property	Specification	Remarks
Focal Length	25mm	
F#	2.0	
Wavelength	1.2μm-3.4μm	
Image Diagonal	3.2mm	
Average Transmission	>90%	
Circular FOV	7.3°	
Back Focus Distance	12.94mm	
Back Working Distance	8.94mm	
Dimensions	Length 43mm, Ø46mm	
Focus Type	Manual Focus	
Focus Range	2m to infinity	
Mount Type	1"-32teeth/inch	
Detector	64*64pixels, 50μm	
Weight	140g	
Environmental		
Operating Temperature	-30°C to +60°C	
Storage Temperature	-40°C to +80°C	
External Coating	AR	Anti-Reflection coating
Humidity	100%RH at 26°C and 74%RH at 35°C for 24 hours	

Drawing

