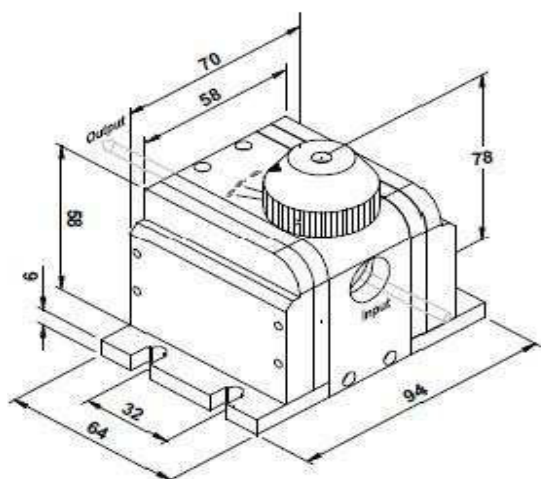
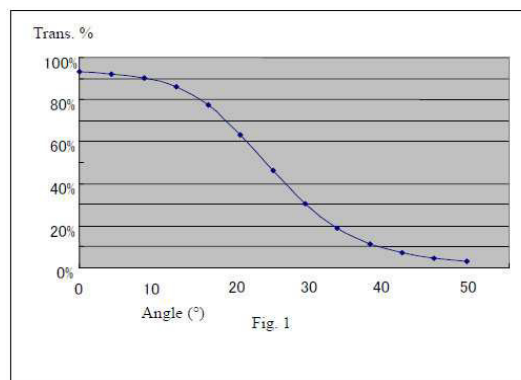


# Laser Attenuator

High power lasers require precise control of energy levels. The attenuator module is a compact accessory that accurately sets the energy transmitted while keeping the laser running under its more stable conditions and there is no beam displacement. The attenuator is suitable for input average power below 150 W. It has been industrial proven stability. Motorized laser attenuators are also available which is available based on the request. Of the laser beam, it can be operated manually.



## ATT Series

Part No.	Wavelength	Input CA (mm)	Transmission Variable Range
ATT-355	355nm	3.0	92%-10%
ATT-532	532nm	3.0	92%-10%
ATT-1064	1064nm	3.0	92%-10%
ATT-1064-E	1064nm	3.0	99%-80%
ATT-10.6-WC	10600nm	19.0	90%-10%